



Fact Sheet



READING YOUR WATER METER

Where is your meter located?

Generally, water meters are located in line with the front boundary of your property. They are above ground with a metal or plastic lid.

Where is your meter number located?

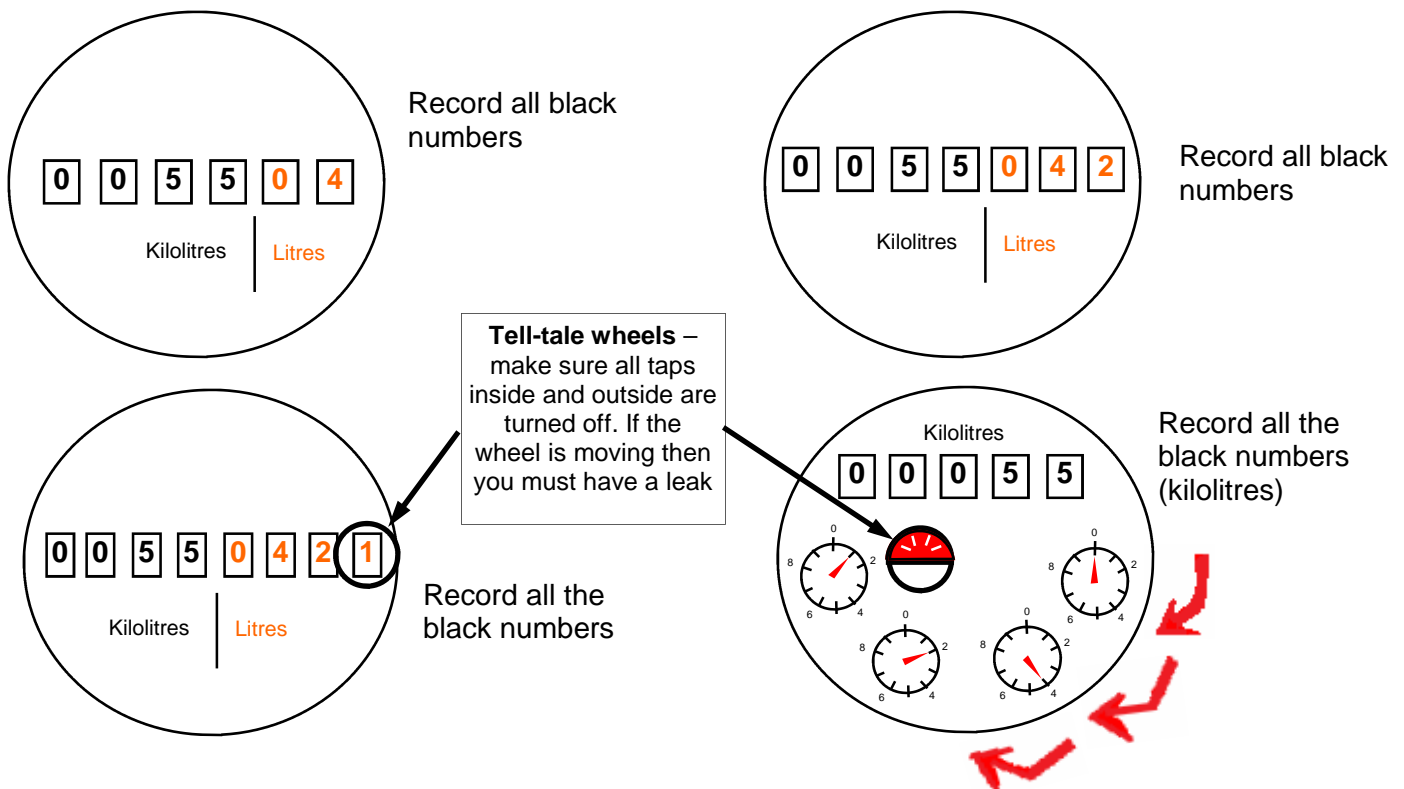
The meter number is stamped under the lid above the recording digits.



How to read your meter

Reading your water meter is quite a simple task to perform. However, there are a number of different types of

Water meters generally read from left to right, black digits read kilolitres (kL) and red digits show the single litres used (L). Your meter may have two, three or four red numbers. All examples below have a meter reading of 55 kilolitres and 42 litres or 55,042 litres.



Why read your own meter?

By reading your own meter you can keep a close eye on your household consumption. Use the table on the back to see how much water your family uses each day and challenge yourself to reduce this amount.

HOW TO DETECT IF YOU HAVE A LEAK

You can also detect leaks by reading your meter. Ensure that all taps around the house are turned off and read your water meter before you go to bed at night. Before any water is used in the morning read your meter again, if it has changed then you know you have a leak and you should contact your plumber to locate and fix it. Remember a dripping tap or leaking cistern can waste about 55L of water per day!

www.young.nsw.gov.au or phone (02) 6380 1200

